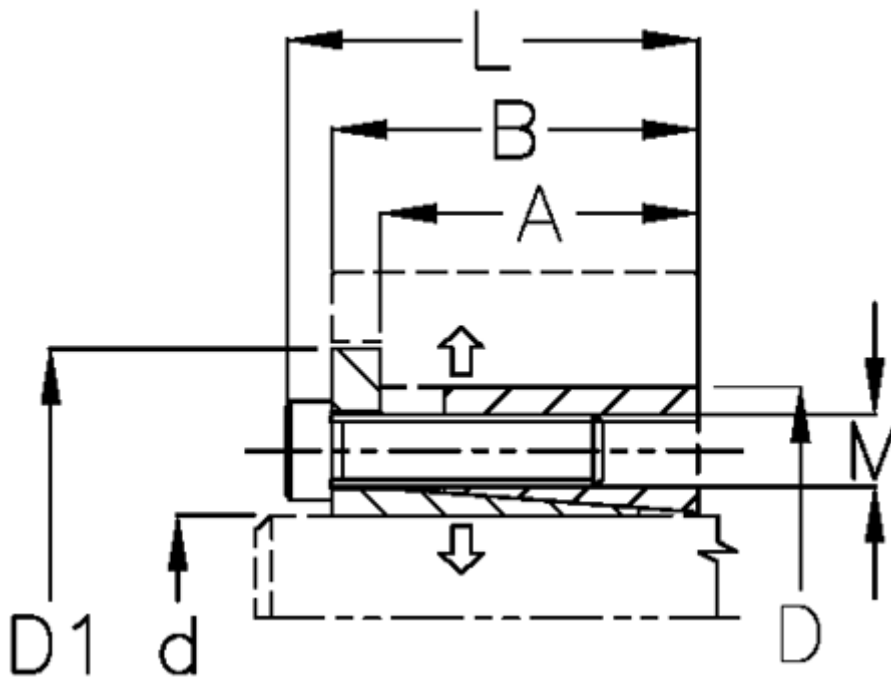


Article number: 434600110

Description: Rota-fix shaft-hub connection ES 110x155
Steel

Note: Self centering - high transmissible torque. During the clamping, the hub can axially displace.

Measures



A mm	= 31.0	M mm	= M12
B mm	= 44.0	P N/mm ² surface pressure on shaft/hub	= 130
D1 mm	= 164	Surface roughness	= -
d H8 mm	= 110	T N m torque	= 10700
D mm	= 155	Ts N m bolt tightening torque	= 145
Fit tolerance	= -		
F kN torque	= 200		
L mm	= 56		